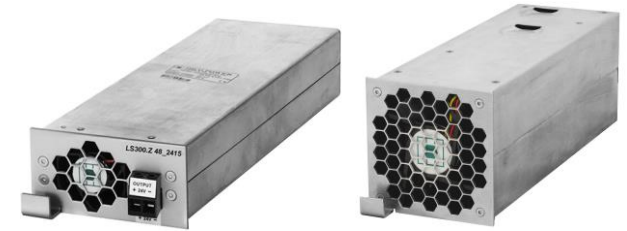


LS300.Z (RECTIFIER, 350W/700W)

PLUG-IN POWER SUPPLIES

- ⊗ Input voltage 230V~50Hz
- ⊗ Output voltage 48V (12V, 24V) / 350W (1U) or 48V(24V) / 700W (2U) output power
- ⊗ Active PFC, resonant technology
- ⊗ High efficiency (94%)
- ⊗ Temperature operating range -30°C~+60°C
- ⊗ Mounting type: plug-in module
- ⊗ Standards: Electrical safety - EN 60950, EMC - EN 61000-3-2, EN 55032



The LS300.Z type rectifier is a plug-in unit for LS1500 chassis. Rectifier units are built in most advanced technology of the energy conversion with respect to maximum efficiency. The 1U unit provides 48V (12V, 24V) / 350W output, the 2U unit provides 48V (24V) / 700W output power. In LS1500 power supply configuration are rectifiers controlled through LS1500.ZS BS management system unit. The fan is temperature controlled.

The green LED inside informs about rectifier operation.

Model numbering:

LS300.Z XXYYP - Z = plug-in module, XX = nominal output voltage, YY = maximum output current, P = parallel operation

LS300.Z rectifiers are designed as plug-in units. Input, output and control pins are on the rear connector.

MODEL SPECIFICATIONS	LS300.Z 1225P 1U	LS300.Z 2412P 1U	LS300.Z 4806P 1U	LS300.Z 2425P 2U	LS300.Z 4812P 2U
Input voltage	230V~50Hz	230V~50Hz	230V~50Hz	230V~50Hz	230V~50Hz
Output voltage	13.8V(25A)	27.6V(12.5A)	55.2V(6.25A)	27.6V(25A)	55.2V(12.5A)
Output power	350W	350W	350W	700W	700W
Efficiency	92%	93%	94%	93%	94%
Dielectric strength input/output	4kV	4kV	4kV	4kV	4kV
Operating temperature	-30°C - +60°C	-30°C - +60°C	-30°C - +60°C	-30°C - +60°C	-30°C - +60°C
Local signalization	LED - rectifier OK	LED - rectifier OK	LED - rectifier OK	LED - rectifier OK	LED - rectifier OK
Parallel operation	Yes	Yes	Yes	Yes	Yes
Air flow	controlled	controlled	controlled	controlled	controlled
Overcurrent protection	26A	13A	6.5A	26A	13A
Over temperature protection	85°C	85°C	85°C	85°C	85°C
Overvoltage protection	Yes	Yes	Yes	Yes	Yes
Undervoltage protection	Yes	Yes	Yes	Yes	Yes
Mounting type:	Plug-in module	Plug-in module	Plug-in module	Plug-in module	Plug-in module
Dimension W x H x D (mm)	89 x 45(1U) x 250	89 x 45(1U) x 250	89 x 45(1U) x 250	89 x 88 (2U) x 250	89 x 88 (2U) x 250
Weight (kg)	0.65kg	0.65kg	0.65kg	1.2kg	1.2kg
Degree of protection	IP20	IP20	IP20	IP20	IP20
Part No.	IP.2131.044.08	IP.2131.044.02	IP.2131.044.03	IP.2131.044.06	IP.2131.044.05